

# Diagnostic Services



Diagnostic Services

# VALSCOPE<sup>®</sup>



Are you interested in significantly reducing your overall maintenance costs and improving plant-operating efficiencies? Masoneilan offers the necessary tools and expertise to support and implement effective preventive/predictive control valve maintenance programs to help you meet your goals.

Masoneilan's ValScope<sup>®</sup> valve diagnostic system provides advanced capabilities for accessing key operating information and characteristics of control valves. This proprietary system was developed using the knowledge and experience available only to an established OEM such as Masoneilan. Our highly competent technical staff can provide real-time status by analyzing the data collected using the ValScope system.

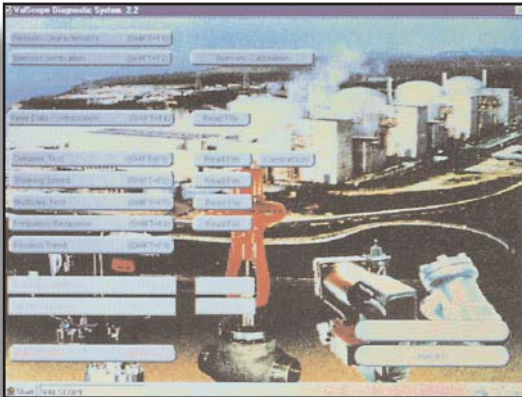
ValScope is a portable microprocessor-based system, which can be used to perform diagnostics and calibration of pneumatic valve systems or subassemblies, such as I/P transducers, valve positioners and actuators. The imbedded software provide information on critical valve parameters, including bench set, valve stroke, friction, etc.

## Masoneilan<sup>®</sup>

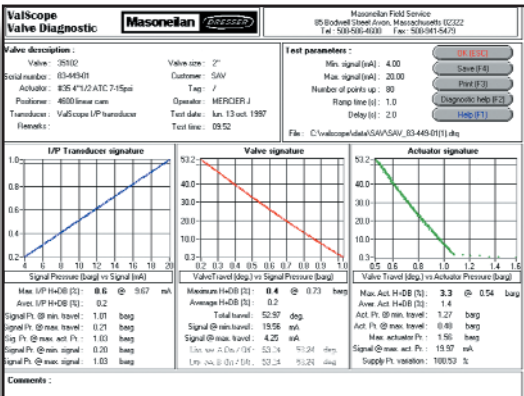
**DRESSER**  
Flow Control

# Diagnostic Services

# ValScope®



The screens are designed for easy sensor verification, test selection and menu driven data entry.



A typical diagnostic chart displays valve system problems at the bottom of the chart.



The color coded plug receptacles are pin-keyed for easy and error-free use.

## Key Customer Benefits

- Improve Overall Plant Performance
- Reduce Operation and Maintenance Costs
- Reduce Manpower Requirements
- Reduce Unscheduled Maintenance
- Improve Spare Parts Planning
- Provide Accurate Data for Efficient Decision Making

## ValScope Features

- Windows® based software containing intellectual property from leading valve manufacturer
- Fast Microprocessor-based data acquisition system
- Can be used on any pneumatic control valve system (rotary or reciprocating)
- Operable within a wide stroke range
- Pressure and displacement sensors
- Field printing capabilities
- Integrated computer based training (CBT) package
- Internal HART® modem for communication with HART devices
- Internal Foundation Fieldbus software permits setup or monitoring of Foundation Fieldbus devices

## Advanced Capabilities

The self-contained system is ergonomically packaged within an industrial computer with a full color display. The small size and weight allows for ease of portability to practically any plant site in the world. Unique features and capabilities of the system include the ability to:

- Record data without removing valves from operation
- Identify trends through comparison of current and past valve signatures
- Analyze key valve characteristics, including hysteresis, deadband, and stroking speed
- Identify problems relative to travel adjustments, friction, wear, etc.
- Perform dynamic signature analysis of the complete valve system, i.e., valve, actuator, and instrumentation
- Remotely analyze diagnostic signatures using companion software program